



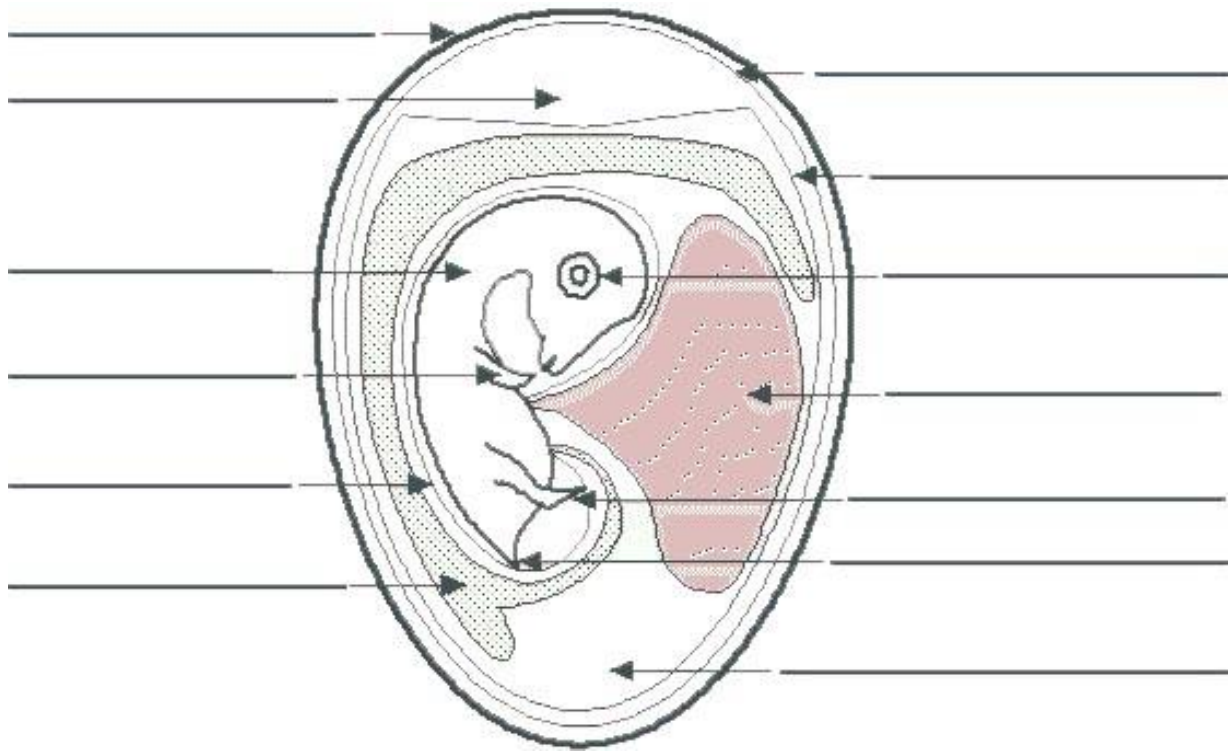
YOUTH EXHIBITION POULTRY ASSN.

www.youthexhibitionpoultry.org

LABEL THE CHICKEN EGG (10 days old)

THIS MAY BE ADDED TO YOUR RECORD BOOK FOR EXTRA POINTS

Y · E · P · A ·



air cell - a space at the large end of the egg, between the inner and outer shell membranes.

albumin - the egg white. It provides protein and water for the embryo and protects it from microorganisms.

allantois - a sack that holds some of the embryo's waste. It is attached to the embryo near the legs.

amnion - a membrane that surrounds the embryo, protecting it from dehydration (losing water) and shock.

eggshell - the hard, protective coating of the egg. It is semi-permeable; it lets gas exchange occur, but keeps other substances from entering the egg. It is made of calcium carbonate.

embryo - the developing chick inside the egg.

eye - large and prominent on the head.

inner shell membrane - the thin membrane located between the outer shell membrane and the albumin.

leg - one of the lower limbs of the chick.

outer shell membrane - the thin membrane located just inside the shell.

tail - located at the far end (the posterior) of the embryo.

wing - one of the upper limbs of the chick.

yolk - the yellow part of the egg; it contains nourishment (food) for the embryo.